

School Guidance 2022

EXPOSURE AND SYMPTOMS GUIDANCE

EXPERIENCING SYMPTOMS WITHOUT A KNOWN EXPOSURE

The following are guidelines for a student or staff member who is experiencing symptoms.

- If you are experiencing symptoms, you are encouraged to seek COVID testing. For testing, contact your physician or visit our community testing site page [here](#).
- If you receive a **positive test result**: stay home for at least 5 days*, and if you are fever-free without the use of fever-reducing medication for 24 hours **and** see improvement in other symptoms on day 5, you may return, but must wear a well-fitting mask for 5 days.
- If you receive a **negative test result**: you may return once you have been fever-free without the use of fever-reducing medication **and** symptom-free for 24 hours.
- If COVID-19 symptoms are present but you are not tested, it is recommended to stay home/isolate for 5 days*

EXPOSED TO POSITIVE COVID-19

The following are guidelines for a student or staff member who has been exposed to someone with a positive COVID-19 test. **REFER TO FLOW CHARTS (PG 3)**

For household contacts, see flow chart on PG 4.

- If you have come into contact with someone who has tested positive and you are not vaccinated, you should quarantine for 5 days* starting from the date of your last contact with the person who tested positive for COVID-19.
- If you are fully vaccinated and do not have COVID-19 symptoms, you do not need to quarantine, however it is recommended that you get tested 5 days after an exposure and wear a mask in all indoor public settings for an additional 5 days.
- If you are experiencing symptoms, you are encouraged to seek COVID testing. For testing, contact your physician or visit our community testing site page [here](#).

SYMPTOMS AT SCHOOL

The following are guidelines for a student or staff member who is exhibiting symptoms of COVID-19 while at school. **REFER TO FLOW CHARTS (PG 2).**

Student:

- Student reports symptoms to staff member or staff member observes symptoms.
- Student will be sent to health isolation room.
- Parent/guardian will be notified and should arrive to pick up student as soon as possible.
- Student will need to stay home isolated while waiting for test results. If they are not tested they need to isolate for 5* days.

Staff:

- Staff member will inform supervisor.
- Staff member will need to stay home isolated while waiting for test results. If they are not tested they need to isolate for 5* days.

COVID SCREENING QUESTIONS

Please answer the following questions each day before students get on the bus or are dropped off at school:

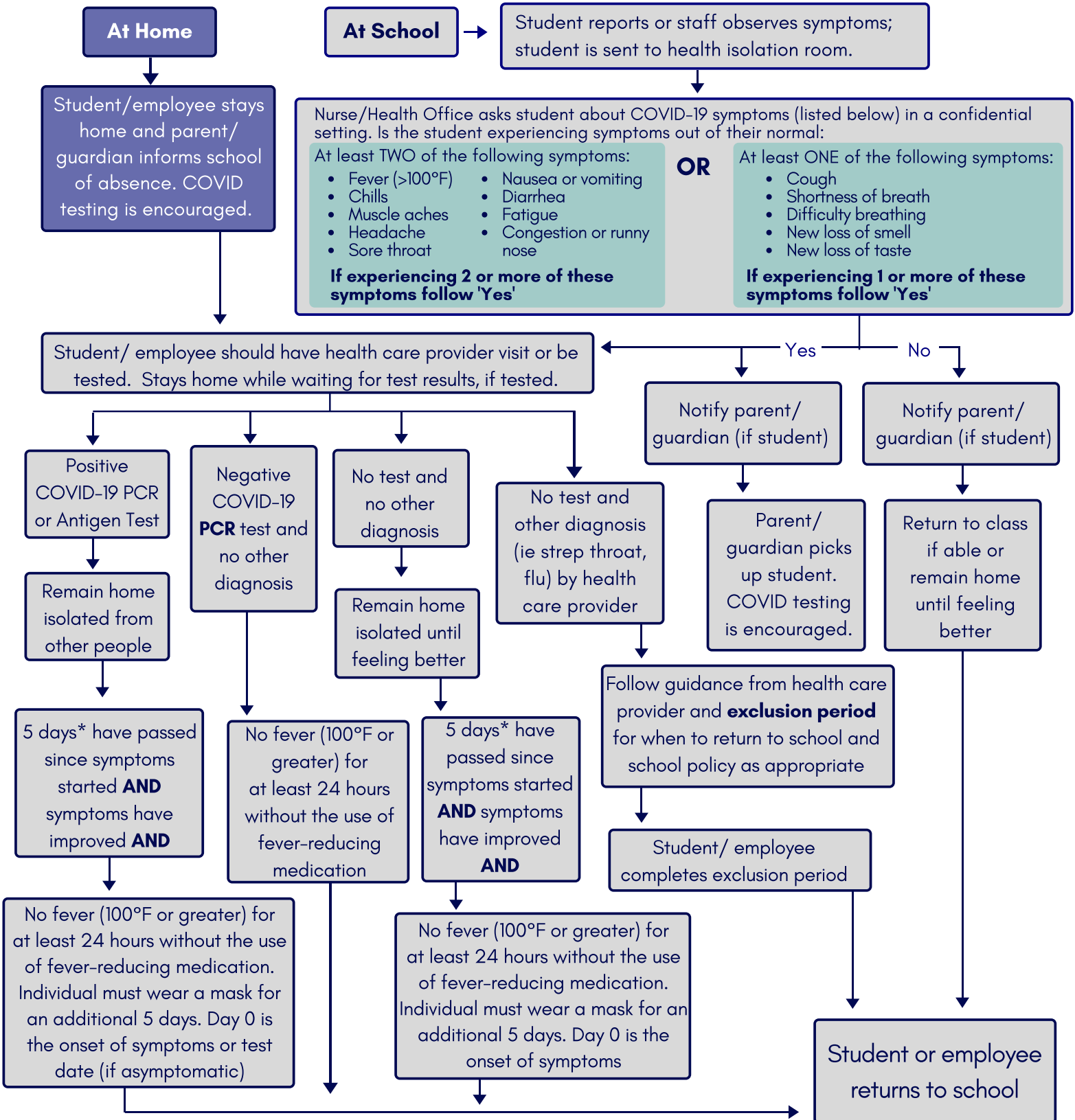
1. Has your student been in close contact with a confirmed case of COVID-19?
2. Has your student been experiencing a cough, shortness of breath or difficulty breathing, or a sore throat?
3. Has your student had a fever over 100 degrees in the last 24 hours?
4. Has your student had a new loss of taste or smell?

If the answer to any of these is yes, please do not send your student to school. Contact your physician to see if they would like you to come in for COVID testing.

*depending on guidance from Fond du Lac County Health Department. Isolation may be greater than 5 days if fever over 100°F is present and other symptoms are not improving.

School Guidance 2022

STUDENT OR EMPLOYEE FEELS SICK



*days depending on guidance from Fond du Lac County Health Department. Isolation may be greater than 5 days if fever over 100°F is present and other symptoms are not improving.

** The District will be working with Fond du Lac County Health Dept. when there is potentially close contact of positive cases and deciding if further action is needed on a case by case basis.

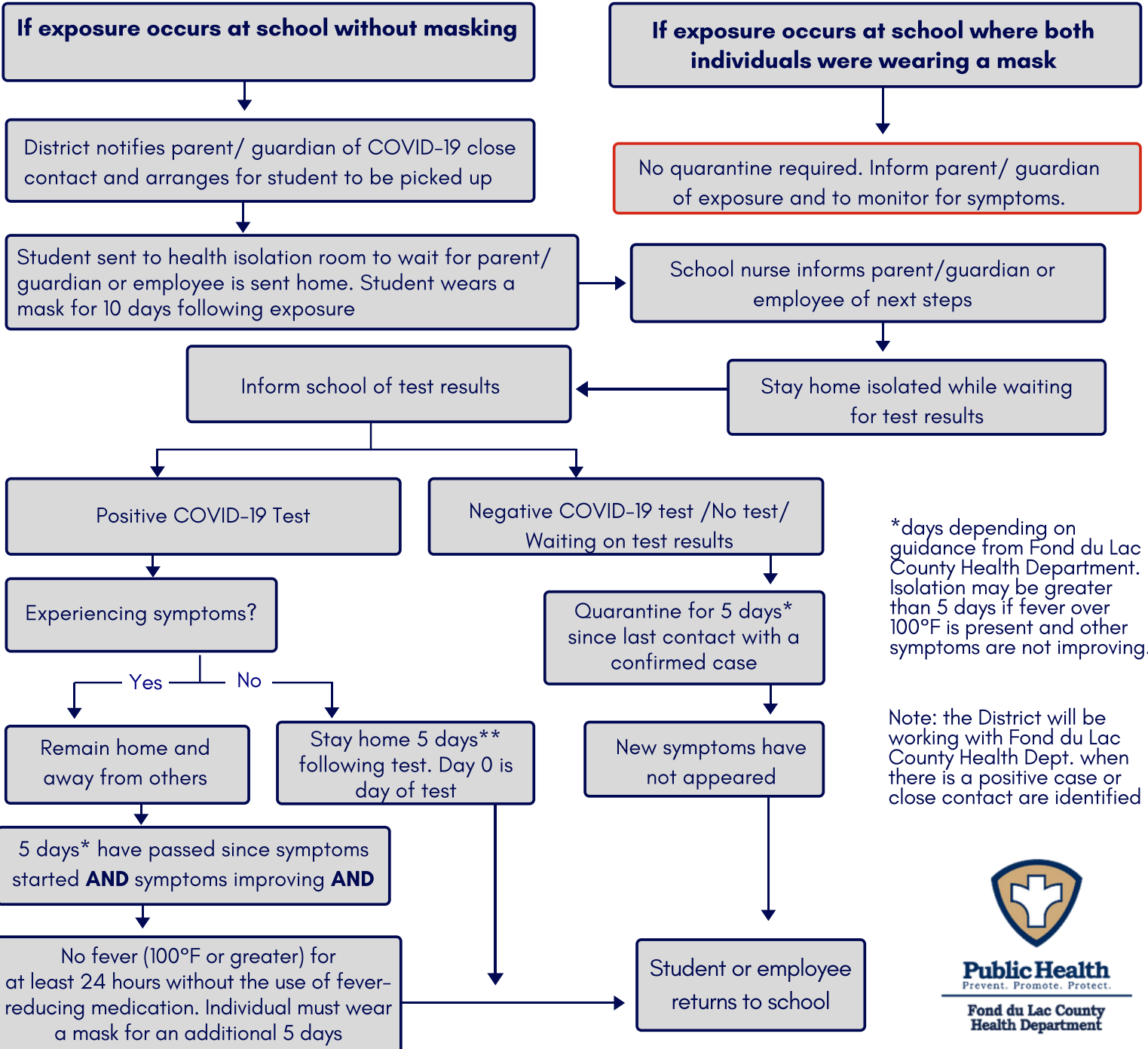
Source: WI DHS (2021)

School Guidance 2022

STUDENT OR EMPLOYEE CLOSE CONTACT WITH CONFIRMED COVID-19 INDIVIDUAL

If someone has been fully vaccinated against COVID-19 (14 days have passed since completing vaccine series) and was in close contact with someone with COVID-19, they do not have to quarantine as long as they remain symptom free. **These individuals should get tested 5 days after exposure, even without symptoms.** They should wear a mask and monitor for symptoms for 10 days or until they receive a negative test result. If individuals develop symptoms, they should get tested immediately.

***The below chart only applies for unvaccinated individuals. If you are recently vaccinated or boosted, wear a mask for 10 days, test on day 5, and monitor for symptoms.**



*days depending on guidance from Fond du Lac County Health Department. Isolation may be greater than 5 days if fever over 100°F is present and other symptoms are not improving.

Note: the District will be working with Fond du Lac County Health Dept. when there is a positive case or close contact are identified

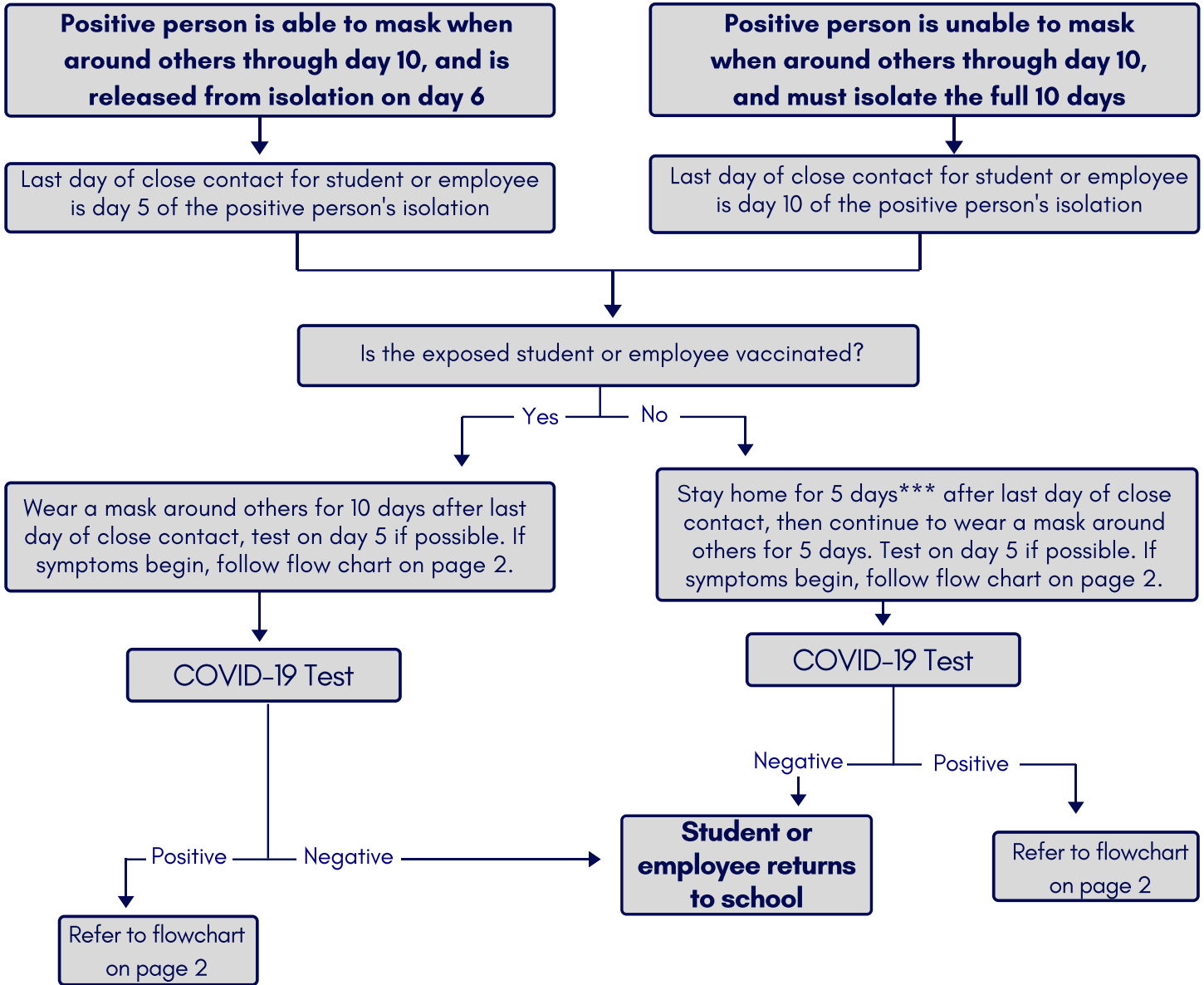


Public Health
Prevent. Promote. Protect.
Fond du Lac County Health Department

Source: WI DHS (2021)

School Guidance 2022

STUDENT OR EMPLOYEE LIVES WITH A POSITIVE PERSON (HOUSEHOLD CONTACT)



*** if quarantine is absolutely impossible, individual must wear a mask for 10 days after close contact

Source: WI DHS (2021)



Public Health
Prevent. Promote. Protect.

Fond du Lac County Health Department